



Ball Transfer Unit A800-60-16

Ball Units Series A8 - Wheel S-800


 -30 °C - +70 °C


swivels easily


wear resistant


shock proof

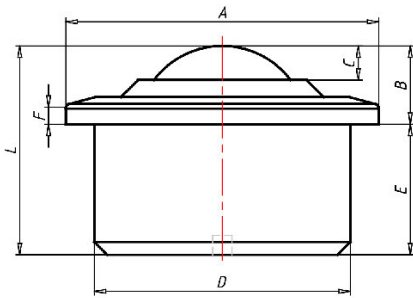

floor protective


weather proof

Wheel

Ball: zinc-plated or stainless steel

Housing, zinc-plated or stainless steel



Ball Transfer Unit

Series: 800

Ball-Ø mm: 60

Finish housing: steel zinc plated

Finish Balls: stainless steel

Load Capacity kg: 1500

Load capacity tested according to EN 12530 and EN 12527

A mm: 117

B mm: 29,5

C mm: 17

D mm: 100

E mm: 48,0

F mm: 5

L mm: 77,5

Advantages

- ✓ Casing made of solid steel on the lathe
- ✓ High load capacity
- ✓ Low profile
- ✓ Holes to let out dirt

©Copyright 2024 Rollenbau GmbH, www.rollenbau.at 29.04.2024

Applications

- Haulage way
- Assembly lines